

# Escure Ranch (Rock Creek) Management Unit

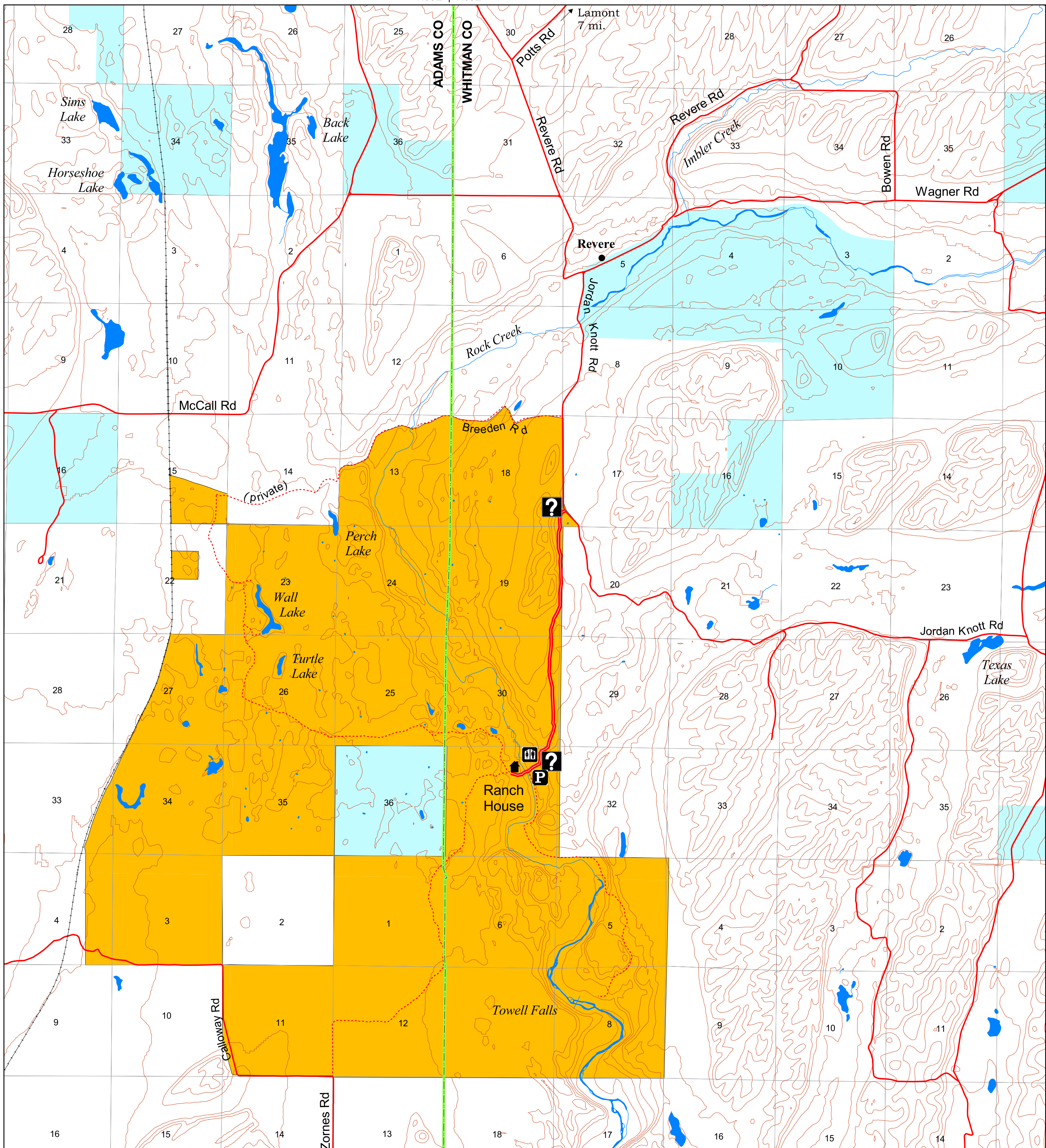
Recreation  
Opportunities:  
**DAY USE ONLY**



No  
Camping

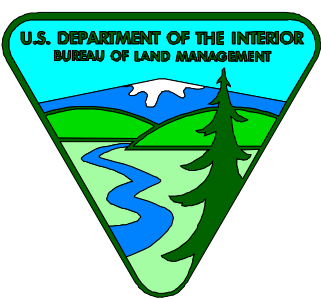


R38E | R39E



It is unlawful to trespass on private lands. State hunting and fishing regulations apply to private lands. Landowners are not required to post or fence their lands. Check with private landowners before entering their property.

0 1 2 Miles



USDI - Bureau of Land Management  
Spokane District  
1103 N. Fancher  
Spokane, WA 99212  
(509) 536-1200

No warranty is made by the Bureau of Land Management as to the accuracy, reliability, or completeness of these data for individual or aggregate use with other data. Original data was compiled from various sources. This information was developed through digital means and may be updated without notification.



BLM Administered  
State  
Private  
Stream

--- Railroad  
— Access Route  
— Improved Road  
- - - Other Road or Foot Trail  
Access as Designated

— County Boundary  
P Parking  
? Information  
Restroom

